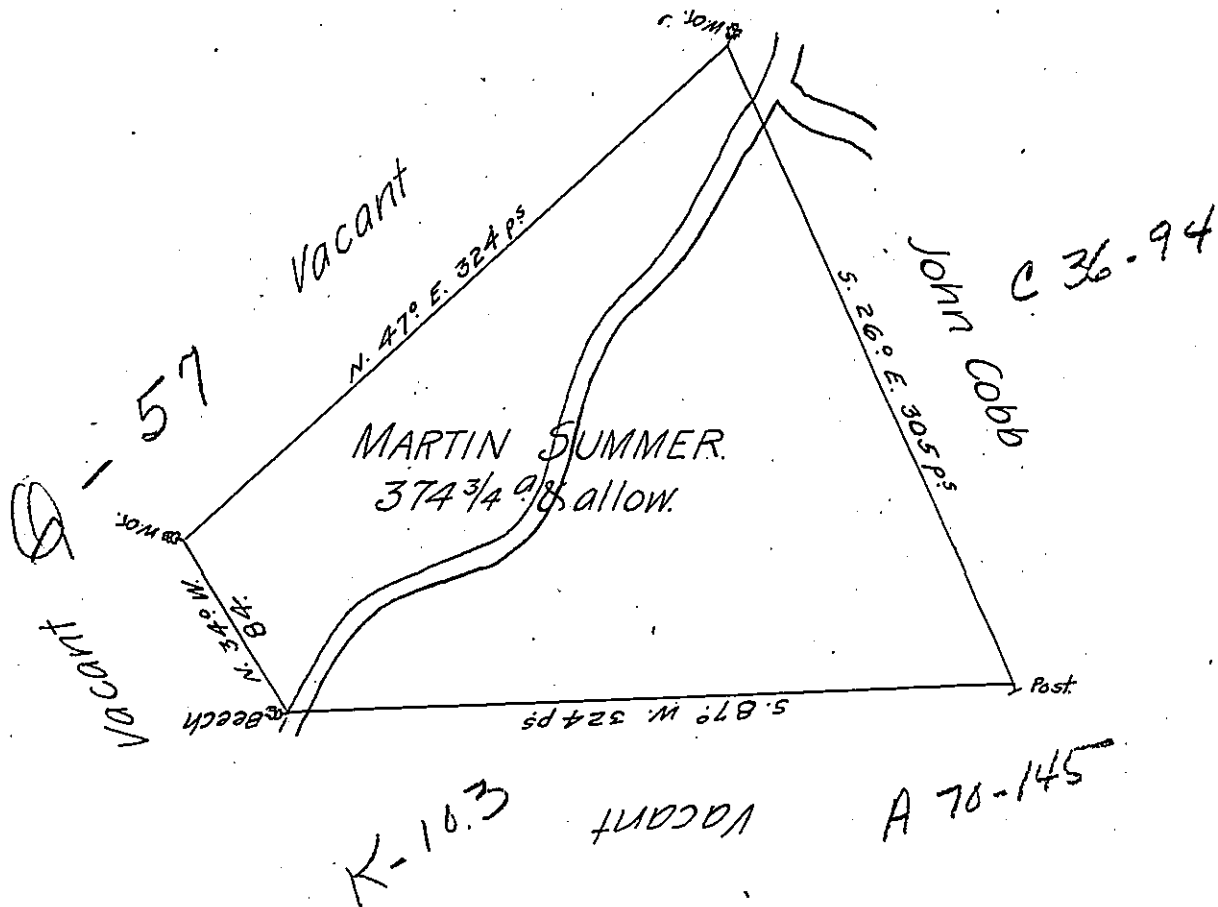


✓



A Draught of a Tract of land called Chamberry, Situate by Estimation about Nine Miles above the Mouth of Nescopeck Creek, adjoining land Surveyed on said Creek, for John Cobb in the County of Northumberland, containing three hundred & ~~Seventy~~ Seventy & three quarters ~~four Acres~~, besides the usual allowance of 6th Cent for Roads &^{ta} Surveyed the 12th Day of ~~Oct~~ November 1773, for Martin Summer In Pursuance of a Warrant Dated the 31st Day of July 1773.

by Cha^s Stewart, D^y Sur^r.

To John Lukens, Esq^r
Survey^r Gen^l.

IN TESTIMONY that the above is a copy of the original remaining on file in the Department of Internal Affairs of Pennsylvania, made conformably to an Act of Assembly approved the 16th day of February, 1833, I have hereunto set my Hand and caused the Seal of said Department to be affixed at Harrisburg, this first day of November 1906.

George S. Brown
Secretary of Internal Affairs.